

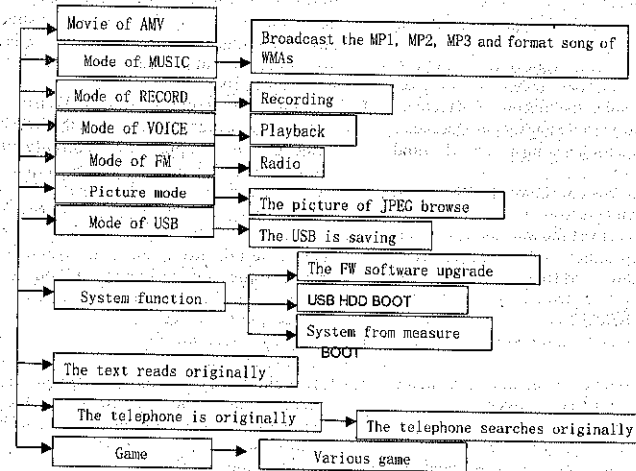
The function says all

- 65,000 whole colourful high-speed CSTN manifestations of colors of the 128 X128 pixel hold
- Support various music formats of MP1, MP2, MP3, WMA, WMV, ASF, WAV
- Unique movie function of AMV
- The picture of JPEG browses the function
- The TXT text reads the function originally.
- The telephone checks the function originally
- Game function
- " Different dimension" disk function, encrypt parts of sizes adjustable whole, guarantee personal privacy.
- A radio with high fidelity FM of whole frequency, total 20 conservancy broadcasting stations of 20+.
- Support the synchronous manifestation of the screen lyrics, learn to record the fast convenience of lyrics.
- Humanization thin go in to fade out to broadcast, make ear felling more comfortable.
- The complete sketch turn the interface operation and can move the disk document to clip the management
- Inside place the microphone, high fidelity recording, continue the recording and can amount to 35 hours@128 M flash
- The USB2.0( FS) connects, the tallest speed amounts to the 1000 K Byte/ S
- The strong function expands the ability, passing the on-line firmware upgrade
- The convenient fragment A- B replies to read, the high fidelity contrast follows to read, 16 the segments become to broadcast soon.
- Support the Windows 98/ ME/2000/ XP, and the Mac OS 10. The X and the Linux Kernels are more than 2.4.2, don't need to install to drive the procedure
- Nine precise electricity of classes quantity supervision manifestation
- Seven kinds of machine with balanced tone color
- Support 25 national language speeches.

1

!Say all.

Function frame diagram

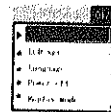


2

In general use function of product:

- Support most 99 statures catalogues in one class are of music document and the recording document broadcast.
  - Support each catalogue most support 99 recording documents' identify.
  - Support the current catalogue of this machine deletes single or all song( or recording) documents.
  - Shut down to remember the function: Can recover to shut down after switch on before various appearance, include memory which a song or record sound the position.
  - Break to order to sow continuously: Broadcast the stop hour remembers to broadcast the position, the some song orders to a time while broadcast the some catalogue up is shut down, switch on after then park the last time of time order, Play after order to start broadcast from now on.
- 1.1.1 Key function definition:
- 1.1.1.1 PLAY: Switch on, shut down, broadcast, pause.
  - 1.1.1.2 MENU: Cut over the work mode, the menu options, the interface cut over.
  - 1.1.1.3 NEXT: Next, quickly enter.
  - 1.1.1.4 PREV: Previous, quickly back.
  - 1.1.1.5 A- B/ REC: A- B/ record sound the hot key/ cut over the volume to regulate the appearance

- 1.2 Fast function of the MENU key
- 1.2.1 At the MUSIC, RECORD, VOICE, FM, TXT, IMAGE, the PHONE BOOK, GAME, MOV, in the SYSTEM, in addition to the special provision situation of the outside or special obsolescent, grow to press MENU key, is all to stop operate at present, return the main course list.
- 1.3 The function elucidation of the POWER key
- 1.3.1 The function elucidation of the ON/ OFF key
- Because OLED application, certainly will must the lithium battery power supply, therefore, need a way of doing that breaks to open the power supply on the electric circuit.
- 1.4 Trumpet
- When insert the headphones, the trumpet (player) does not work; be to pull out the headphones, the trumpet( player) work, then output the voice.
- 1.5 Standard control interface
- 1.5.1 Standard menu
- 1.5.1.1 Elucidation: The standard menu provides a menu choice interface, in the interface of each function piece, this interface would be a lot of heavy use. Enter the hour each time.
- 1.5.1.2 Format



#### The System enactment

- While holding most five, such as not enough five, while show, depend up arrange.
  - Triangle designation of for activate a name.
  - Press Menu key will choose and enter that options.
  - Short press PLAY key and will withdraw the menu.
- 1.5.1.3 Key function
- 1.5.1.3.1 Short press or press down the NEXT, blue carry bottom on blue's back tread into bottom move, arrive most next turn over behind on hold, keep till the last on hold, then turn over to then return to the first to hold. Show to should of activate the diagram mark, and change solid hour function.
- 1.5.1.3.2 Short press or press down the PREV, with the NEXT contrary.
- 1.5.1.3.3 Short press MENU, pick out to activate the position diagram mark, the performance pick out item to should of function.
- 1.5.1.3.4 Short withdraw the menu according to the PLAY.
- 1.6 Many phonetic support
- 1.6.1 Support the simplified Chinese character, English, traditional Chinese character, Japanese, Korean, French, German, Italian, Holland text, Portuguese text, Spanish, Russian, Arabic language, text of peaceful, Sweden text, Denmark text,

Czech text, Poland the text, the this fells the gram text, gram Luo a second text, Hungary text, Romania text, Turkey text, text of Slovenia, Hebrew.

- 1.7 Electricity quantity
- 1.7.1 Give or get an electric shock the quantity many class manifestation.
- 1.7.2 Mean the low electricity, need to be refresh in time. ( refresh the current public affairs to pull out the POWER key to the appearance of ON necessarily, otherwise can't refresh)
- 1.7.3 Mean the amount of electricity full.
- 1.7.4 At the interface that have in solid show the amount of electricity. RECORD recording interface, give or get an electric shock the quantity to reduce 2 classes above hour solid hour show.
- 2 Main menu
- The eligibility chooses the MUSIC, RECORD, VOICE, FM, TXT, IMAGE, the PHONE BOOK, GAME, ten functions of MOV and SYSTEM.
- 2.1.1 The interface manifestation



Interface 05-1-1. bmps of Music

Each circular diagram mark represents a mode, only being placed in in the center position also appear the blue of then can enter, choice the mode need will show three animation modes of diagram.



#### 4.2.2 Broadcast the interface manifestation



The Music broadcasts the 05 js-.bmp

- ◆ The knife man - impulsive punishment: Broadcast the level is smooth to roll over.

#### 4.2.3 Key function

- ◆ Short press MENU key: Enter to broadcast the menu interface.
- ◆ Grow to press MENU key: Enter the lyrics interface if have to should lyrics., Stop broadcast if have no to should lyrics., enter the main course list.
- ◆ Short press PLAY key: Enter the stop interface.
- ◆ Grow to press NEXT key: For quick enter the function, until a knot tail of song.
- ◆ Grow to press PREV key: In order to quickly back the function, until the beginning of a song.
- ◆ Short press Next key: Music 2 seconds fade out, jumping next song and broadcasting, next at this time is according to broadcast the mode at present to choose of, at current mode for circulate a head, next is to press all circulating ways to choose.
- ◆ Short press PREV key: With the NEXT contrary.
- ◆ Short press REC key to cut over the volume to set the interface, short press PREV/ NEXT key, adjust the volume size.
- ◆ Grow to press REC key in to record sound the appearance to combine to start record sound

#### 4.2.4 Illegal document processing

4.2.4.1 When the automatic selected songs or hands move the selected songs to meet the illegal document, hint" the format mistake/ Format Error", wait for two second after, return the stop interface.

#### 4.2.5 Broadcast the menu interface

4.2.5.1 Elucidation: Provide the customer choice various functions, include

Circulating mode( Repeat): The enactment broadcast the way of the hour of song.

The sound effect mode( Equalizer): The enactment broadcast the music result of the song.

Broadcast the speed( the Tempo Rate): The adjustment broadcasts the rate of speed of the speed of the song, format of WMA excepted.

Reply to read the mode( Replay): Enter to reply to read the interface, start reply to read the function.

Reply to read the number of times( the Replay Times): The number of times that enactment replies, to read.

Reply to read the partition( the Replay Gap): Each time the enactment broadcasts the partition of the hour again.

Withdraw/ Exit): Return to broadcast the mode, sow to play music still at this time.

4.2.5.2 The interface manifestation



The interface of Music broadcasts the menu 05. bmps

- ◆ Activate the position manifestation for blue carry bottom on blue's back.
- ◆ "The sound effect mode" for activate the name of the position.

#### 4.2.5.3 Key function

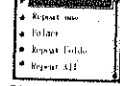
4.2.5.3.1 The standard diagram mark menu function.

4.2.5.3.2 The spare time is 8 to withdraw automatically.

4.2.6 Circulating enactment interface

4.2.6.1 Elucidation: The circulating mode that sow to play music in this choice, sow to play music still at this time.

4.2.6.2 The interface manifestation



The interface of Music broadcasts the menu-circulation mode 05. bmps

4.2.6.4 Circulate a detailed list of the mode choice:

( Common mode, Normal): At present the song of the catalogue is after broadcast, a song of catalogue after continuing to broadcast.

( Single song circulation, the Repeat One): Broadcast the current song again.

( The catalogue broadcast, Folder): At present the catalogue song is after broadcast, stopping broadcast.

#### 8.1.3.4.1 interface manifestations



Interface of Music- stop menu- (the main dish catalogue- catalogue chooses the 05. bmps

- ◆ What to show is long of catalogue
- ◆ In addition to a catalogue, show the valid catalogue only.

( Catalogue circulation, the Repeat Folder) broadcast the song in this catalogue again.

( All circulation, the Repeat All): Broadcast all song in the catalogues again.

( Broadcast random, Random): Broadcast the song in the current catalogue random.

( Browse to broadcast, Intro): The sequence broadcasts the current catalogue inside ex-10 of all songs.

4.2.7 The sound effect enactment interface

4.2.7.1 Elucidation: The sound effect mode that sow to play music in this choice, sow to play music still at this time.

4.2.7.2 The interface manifestation

Show the way together" circulation enactment"

4.2.7.3 Key function

4.2.7.3.1 The standard diagram mark menu function.

4.2.7.3.2 The spare time is 8 to withdraw automatically.

4.2.8 Reply to read the interface

4.2.8.1 Elucidation: The customer can carry on move to reply to read or reply to read automatically.

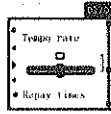
4.2.8.2 The interface manifestation



The Music broadcast- the AB replies to read the 05. bmps

4.2.8.3 The process that reply to read  
 4.2.8.3.1 While entering to move to reply to read, "A" gleams in the diagram mark.  
 4.2.8.3.2 Short press Next or Short press REC key, the AN order settle good, "B" flicker.  
 4.2.8.3.3 Short press Next or Short press REC key, the B order settle good, "A" and "B" fix, starting putting the voice between A, B point again.  
 4.2.8.3.4 Short press PREV or Short press REC or reply to read the number of times of finish the enactment after, return to 8.2.7.3.1, can circulate to carry on thus-> reply to read the function.  
 4.2.8.3.5 Short press Next, enter the manifestation heel to read to reply to read,  
 4.2.8.3.6 Short press PREV, return to 8.2.7.3.3, return to reply to read the function.  
 4.2.8.3.7 Short press Next, enter the manifestation contrast to reply to read  
 4.2.8.3.8 Short press PREV, return to 8.2.7.3.5, return the heel to read to reply to read.  
 4.2.8.3.9 Short return according to the Next 8.2.7.3.1, continue to wait for next the enactment that reply to read.  
 4.2.8.3.10 In above all steps, it is short to press MENU, withdrawing to reply to read the interface, returning to broadcast the interface.  
 4.2.8.3.11 In above all steps, it is short to press PLAY to withdraw to reply to read the interface with broadcast the interface, return the stop interface.  
 4.2.9 Become to set the interface soon  
 4.2.9.1 Set to broadcast the speed at present here, broadcast to the MP3 type music effective, but is ineffective to the WMA.

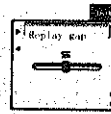
#### 4.2.9.2 Show the interface



The Music broadcast-broadcast the speed 05. bmps  
 4.2.10 Reply to read the mode  
 At 4.2.8 reply to read that the interface interface has already do to elaborate on.  
 4.2.11 Reply to read the number of times  
 4.2.11.1 The choice replies to read the number of times, completing while reply read thus this in reply read that the number of times future reunion with draws automatically. Distinguish for 1-10 times.  
 4.2.11.2 Interface manifestation:



The Music broadcast-reply to read the number of times 05. bmps  
 4.2.12 Reply to read the partition  
 4.2.12.1 Elucidation: The choice replies to read the partition, needing the deadlock to separate here in reply read each time reply read thus. The partition time distinguishes to 1-10.  
 4.2.12.2 Interface manifestation:



The Music broadcast-reply to read the partition 05. bmps  
 4.2.12.3 Key function  
 4.2.12.3.1 Glide the pole key function for the standard.  
 4.2.12.3.2 Such as 8 of spare time, withdraw.  
 4.3 The volume enactment interface  
 4.3.1 Elucidation: In this enactment that carries on the volume  
 4.3.2 The interface manifestation



The volume adjusts the 05 b. bmps  
 4.3.3 The volume designation diagram mark.  
 The sliding yellow closes to this diagram mark more, meaning the volume more big.  
 4.4 The lyrics broadcasts the interface elucidation  
 4.4.1 Total-elucidation: When enter the lyrics broadcast The interface, continue to broadcast the degree of progress manifestation for broadcast to should of lyrics, be after broadcast, according to broadcast

the mode enactment into the follow-up song to broadcast the function, the following continuous song contain lyrics, then still broadcast the interface in the lyrics, if have no lyrics, then returning to broadcast the interface to broadcast the follow-up song.  
 4.4.2 The interface manifestation  
 4.4.2.1 Chinese song:



Synchronous 05. bmps of lyrics  
 The screen is divided into the top and bottom two part, in principle LRC in of a line of to should one part namely 14 Chinese characters, if a line of 14 Chinese characters with precious sight more lyrics within LRC, please at this time to put another part in manifestation, each the part adoption average method calculate synchronous time label.  
 nEnglish song: Together Chinese song processing is similar, but a the part is three, a line of is 14 character lists, the attention be the carriage return is in a middle of single phrase, needing to be add "-" go up and down with the conjunction, but to the single phrase of two character lists, put directly next.  
 nBroadcast current lyrics would high and bright manifestation, the behind is an at wait for in another part, be the waiting lyrics by that time after then high and bright manifestation, but be over of up a part then adjusts into, next wait for also low and bright manifestation.

nOwing to time in the document of LRC is wide spread to be partial to slowly, so while broadcast, to should the lyrics invite f in advance.

4.5 Shut down automatically  
4.5.1 All sub- interfaces in stop interface, have already gone to the initial value within the system management such as the spare time time; need from shut down.

4.6 Exrescent processing  
4.6.1 When broadcast, appearing to read the mistake, then the pause playback, hint "disk mistake!" (Disk error!). (Hint to all adopt the format of text usually.)  
4.6.2 When the heel reads to record sound the space not enough or a catalogue document number is full, then hinting "the space is full!" (Overflow!). Return to reply to read circularly behind. Show the way please according to a top.

**VOICE**  
The VOICE realization\* Document of WAV and\* The document of ACT broadcast. Have the stop interface, broadcast the interface, catalogue choice interface and delete the interface, function choice and set the interface of the type totally.

5.1 The stop interface function elucidation:  
5.1.1 Total elucidation: While entering the stop interface, show the current playback information, wait for the customer operation.  
5.1.2 The interface manifestation



Playback 05. bmps of Voice

- 00:00:03 show for time of the playback
- 01/15 mark which current recording document is, the current catalogue have how much document.
- REC04 is the document, 2004/3/15 10:23 is a date of the document establishment in time. (Stop broadcast don't roll over, roll over while broadcast)
- 5.1.4 Stop menu interface
- 5.1.4.1 Elucidation: Carry on choosing the main dish catalogue( the Local folder), deleting the document( Delete) and withdraw( Exit) here; Enter activate the position as position for last time to withdraw.
- 5.1.4.2 The interface manifestation



Stop menu 05. bmps of interface of Music  
◆ Activate the position manifestation to mark for that diagram to should of activate the diagram mark

- ◆ Main dish catalogue: For activating the name of the position.
- 5.1.4.2.1 Key function
- 5.1.4.2.1.1 Standard menu key function.
- 5.1.4.2.1.2 "Delete the document" for activate the item at present.
- 5.1.5 The catalogue choice interface
- 5.1.5.1 Elucidation: The customer can win election to choose the current catalogue in the valid catalogue( catalogue with document of VOICE), broadcasting the catalogue at present namely. While entering the mode of VOICE each time, will position in the current disk, current catalogue up.

- 5.1.5.2 The interface manifestation  
With music catalogue choice same alike.  
◆ Show to support the long of catalogue  
◆ In addition to a catalogue, can show the valid catalogue only.
- 5.1.6 Delete the interface elucidation
- 5.1.6.1 Elucidation: Carry on the deletion of the document.
- 5.1.6.2 The interface manifestation  
Confirm to delete the interface: Delete with music document same alike, but underneath of document will change recording document.
- 5.1.6.3 The key function according to music document to delete, with music document deletes the way for lord)  
● Short press MENU key: Certain current options, return the stop interface.  
● Short press PLAY key: Cancel the current options, return the stop interface.  
● Grow to press PLAY key: Shut down.
- 5.2 Broadcast the interface function elucidation
- 5.2.1 Total elucidation: While entering to broadcast the interface, show the related information of current song, the auto continues to broadcast the song from the current position, waiting for the customer operation.
- 5.2.2 Interface manifestation such as stop interface, but time column is while account.



Playback 05. bmps of Voice

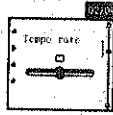
- nREC012004/01/0110:23 while broadcast the level is smooth to roll over.
- 5.2.3 Key function  
● Short press MENU key: Enter to broadcast the menu interface.  
● Short press PLAY key: Enter the stop interface.  
● Grow to press PLAY key: Shut down.  
● Short press Next key: Jump next document combine from the first broadcast.  
● Short press PREV key: Jump previous document combine from the first broadcast.  
● Grow to press NEXT key: Quickly enter, until a knot tail of song.  
● Press down the PREV key: Quickly back, until the beginning of a song.  
● Short press REC key to cut over the volume to set the interface, short press PREV/ NEXT key, adjust the volume size.  
● Grow to press REC key in to record sound the appearance to combine to start record sound
- 5.2.4 Illegal document processing
- 5.2.4.1 When the automatic selected songs or hands move the selected songs to meet the illegal document, hint "the format mistake/ Format Error", wait for two second after, return the stop interface.
- 5.2.5 Broadcast the menu interface.
- 5.2.5.1 Elucidation: Provide the customer choice various functions, include the circulating mode ( Repeat), broadcast the speed( the Tempo Rate) and reply to read the mode( Replay) and withdraw ( Exit); Broadcast the recording still at this time.
- 5.2.5.2 The interface manifestation  
Show to broadcast the submenu with music, but have no choice of EQ.
- 5.2.5.3 Key function

5.2.5.3.1 Short key function of the standard diagram mark vegetables.  
 5.2.5.3.2 Spare time 8 seconds withdraw.  
 5.2.6 Circulating enactment interface  
 5.2.6.1 Elucidation: The circulating mode that sow to play music in this choice, sow to play music still at this time.  
 5.2.6.2 The interface manifestation  
 Show together homology for music to broadcast.  
 5.2.6.4 Circulate a detailed list of the mode choice (Common mode, Normal), (single song circulation, the Repeat One), (the catalogue broadcast, Folder), (catalogue circulation, the Repeat Folder), (all circulation, the Repeat All), (broadcast random, Random), (browse to broadcast, Intro)  
 5.2.7 Reply to read the interface  
 5.2.7.1 Elucidation: The customer carries on reply to read here  
 5.2.7.2 The interface manifestation



Playback of Voice-reply to read the interface 05. bmps  
 5.2.7.3 The process that reply to read  
 5.2.7.3.1 While entering to reply to read, "A" flicker.  
 5.2.7.3.2 Short press Next, the AN order settle good, "B" flicker.  
 5.2.7.3.3 Short press Next, the B order settle good, "A" and "B" flicker, starting putting the voice between A, B point again.  
 5.2.7.3.4 Short press Next/ PREV, return to 3.1, can circulate to carry on thus-> reply to read the function.

5.2.7.3.5 In above all steps, it is short to press MENU, withdrawing to reply to read the interface, returning to broadcast the interface.  
 5.2.7.3.6 In above all steps, it is short to press PLAY to withdraw to reply to read the interface with broadcast the interface, return the stop interface.  
 5.2.8 Become to set the interface soon  
 5.2.8.1 Elucidation: Set to broadcast the speed at  
 Present here, to the WAV, AG8ses all effective.  
 5.2.8.2 Show the interface



The Music broadcast-broadcast the speed 05. bmps  
 5.2.8.4 Broadcast the speed scope: [60%, 200%], 8 classes of  $\pm$  (100% of default).  
 5.2.9 The volume enactment interface is together" sow to play music" mode constitution.  
 5.3 Automatically shut down function.  
 5.3.1 In time of stop interface and its sub-interface, have already gone to the initial value in the SYSTEM such as the spare time time, the system shuts down automatically.  
 5.3.2 In time of broadcast the interface, if broadcast time to have already gone to the initial value in the SYSTEM, need the au to shut down.  
 5.4 Excrement processing  
 5.4.1 When playback, appearing to read the mistake, return the stop interface, hint: "disk mistake!".  
 "Disk error!"

## 6 RECORD

Carry out the document of MS-ADPCM WAV and the AG8 ACT document recordings. Have the stop interface, the recording interface, the pause interface totally, catalogue choice interface.

● Total format of interface



The Record records sound the 05. bmps  
 ● 00:00:03 show for the degree of progress of the recording, stop interface hour show current recording of length.  
 ● 05:05:17 mean to can used for taped total number of spaces  
 ● Mark the coding format of the current recording document, divide the AG8/AD32 two kinds of.  
 ● 01:15:01 will not change, 15 mean the current recording document that catalogue have already.  
 ● The document that REC01 means the current recording, 2003/10/2908:56 mean the date of document.  
 ● Stop interface  
 ● Total elucidation: While entering the stop interface, show the current recording information, wait for the customer operation.  
 ● The interface manifestation is together up:  
 ● Key function  
 ● Grow to press MENU: Return the MAIN.

● Short press MENU: Enter the stop menu interface.  
 ● The long press REC: Enter to record sound the interface, start record sound.  
 ● Grow to press PLAY: Shut down.  
 ● PREV, NEXT: Invalid.  
 6.1.3 Record sound the type choice interface  
 6.1.3.1 Elucidation: At this choice that carries on recording sound the type, the superior quality recording (the Fine REC); The long time recording (the Long REC); The high-quality voice control (the Fine VOR); The long time voice control (the Long VOR).  
 6.1.3.2 The interface manifestation  
 The style is together the EQ choice interface  
 6.1.3.3 Key function  
 6.1.3.3.1 For the standard menu key function.  
 ● Record sound the interface  
 ● Total elucidation: Enter to record sound the interface, the born and new recording document, start record sound with the current coding method, roll over to mark at present just in the recording, and show the degree of progress of the current recording.  
 ● The interface manifestation is together last  
 ● MOD01.ACT 2003/10/29  
 ● 05:05:17 designation surplus recording time.  
 Just keep the document to hint the interface:



The Record recording- keep to hint the 05. bmps

### Function of VOR:

- When did not discover the valid speech, system at wait for the speech appearance, be the detection valid speech the hour continues to start record sound.
- Stop recording of hour of the low telecommunication number.
- Wait for the recording record sound the hour long "00:00:03" the meeting flash move.
- In time of in the recording process, appear the low telecommunication number, keep the recording, return the stop interface.
- Pause interface
- Interface manifestation:

- Enter the pause interface, show the pause appearance, wait for the customer operation, at this time 00:00:03 flickers, an of frequency.
- Shut down automatically.

- In time of stop interface or the pause interfaces and its sub-interface, have already gone to the initial value of the system management such as the spare time time, need into the Standby, but need the conservancy in the recording of the pause interface.

- Broadcasting station of FM
- While entering each time, all enter to broadcast the mode, need the instauration to prepare to save the broadcasting station at present, and broadcast, while entering for the first time, current pin of the broadcasting station orders for the minimum frequency.

### 7.1 The interface format elucidation



### Reception 05. bmps of FM

- : At present the frequency position, engrave one degree form position in the frequency along with the change but the dynamic state changes of the current frequency.

- The frequency engraves one degree form.
- Recognize tacitly the Class is 3 classes.
- At present the frequency value.

- 01 mean the broadcasting station of the current conservancy.03 mean the broadcasting station quantity keep at present.

- High fidelity, single track.
- Designation current volume volume appearance

- Listen to the broadcasting station
- The interface show as above, the current segment of pin is on the 87.5-108 MHzs. The current frequency of the new machine orders the initial value in the 87.5 MHzs.

### 7.2.1 Operating instructions

- 7.2.1.1 Growing to press NEXT key will search a broadcast station and broadcast backward and automatically, if is already the pin that prepares to save to order and then will show to prepare to save the pedestal number. Short press Next key to then take 100 KHzs as the unit, the front further does tiny adjust.

- 7.2.1.2 Growing to press PREV key will search a broadcasting station and broadcast forward and automatically, if is already the pin that prepares to save to order and then will show to prepare to save the pedestal number. Short press PREV key to then take 100 KHzs as the unit to retreat the one step to do tiny adjust.

- 7.2.1.3 Short press REC key, enter to adjust the volume interface, short press PREV/NEXT key to regulate the volume size

- 7.2.1.4 Grow to press REC key, enter the recording appearance of FM.

- 7.2.1.5 Grow to press MENU, enter the main course list.
- 7.2.1.6 Short press MENU, enter the submenu of FM.
- 7.2.1.7 Grow to press PLAY, shut down.

- 7.2.1.8 Short press PLAY key, jump next the broadcasting station that save, there is no prepare of other save the pedestal number is then invalid. Arrive the last one then circulates to after prepare save the pedestal number the first prepare to save the pedestal number.

### 7.3 Submenu of FM

#### Elucidation:

- Keep the broadcasting station( Save): Keep the broadcasting station listen to at present.
- Delete the broadcasting station( Delete): Delete the broadcasting station listen to at present.
- Delete all( the Delete All): Delete all broadcasting stations of storage.
- Common segment of frequency ( the Normal Band): The FM chooses from 87.5 MHzs to the 108 MHz frequency segment.
- Japanese segment of frequency ( the Japan Band): The FM chooses from 76 MHzs to the 90 MHz frequency segment.
- The superior quality recording( the Fine Rec): The sound quality good.
- The long time recording( the Long Rec): The sound quality is general.
- The automatic hunt( the Auto Search) can search to several broadcasting stations automatically.
- Search the Class( the Search Level) chooses the different Class manhunt broadcasting station.
- Withdraw( Exit): Withdraw the menu.

- 7.4 Keep the broadcasting station

#### Elucidation: Keep the frequency s segment lately to prepare to establish the pedestal number. If just tiny adjust to have already kept the item, then keep the current pedestal number inside.

### 8. TXT text reads originally

- Text originally reading choice The
- presses from the main course list. When the Menu key enter, enter the text originally reading choice appearance, show as follows:



The interface-text of JPG reads document 05, bmps have no document, then for empty catalogue.

- press Play key, then entering the text to read the appearance originally, press Next/ PREV key, choose on hold/ ascend on holding the writing.
- Press Menu key, enter the stop submenu. Distinguish to 1. Main dish catalogue, 2. Broadcast the enactment, 3. Delete the document, 4. Withdraw.
- Broadcast the appearance descend is divided into 1. Move to broadcast, 2. Broadcast automatically.

- Broadcast the bottom and can set the au to turn over the page time automatically from 1 choice with 10 seconds.

- Other keys are invalid.

- The text reads the appearance originally. Short press Next/ PREV key, show that choice next on hold/ ascend on holding the writing. Short press Play key, return to the document choice appearance.

- Grow to press Menu key, return to the main course list.

- Other keys are invalid.

- Browser of JPEG
- Carry out the picture of JPEG browse, request can support the network up various in common use to that of JPEG.

- The document choice appearance
- From When the main course list enter, write an article a choice appearance, show as follows:



The JPEG interface- document choice- choice document 05. bmps  
 If have no document, then for empty catalogue.  
 Press Play key, then enter the picture to broadcast the appearance  
 Press Next/ PREV key, choose next/ previous document.  
 Press Menu key, enter the stop submenu. Distinguish to 1. The catalogue choice, 2. Broadcast the enactment, 3. Delete the document, 4. Withdraw.  
 Broadcast the appearance descend is divided into 1. Move to broadcast, 2. Broadcast automatically. Broadcast the bottom and can set the au to turn over the page time automatically from 18 of —  
 Other keys are invalid.  
 ● The picture broadcasts the appearance  
 Enter the picture broadcasts the appearance, run as follow:



17

Short press Next/ PREV key, show next/ previous picture.  
 Short press Play key, return to the document choice appearance.  
 Grow to press Menu key, return to the main course list. Other keys are invalid.  
 9 The telephone is originally  
 ● The telephone search appearance  
 From When the main course list enter, write an article a choice appearance, short the user's name that presses the PREV/ NEXT key choice to to search, show as follows:



Show the interface- the search telephone originally - choice document 05. bmps  
 Again short press Play key in to is shown as diagram:



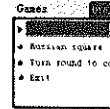
Short press PREV/ NEXT key to browse the information, then press Menu key to withdraw the telephone to check to look for the mode.  
 If have no document, then for empty catalogue.

?The telephone ducting/ lead an operation  
 At search the telephone to show the interface originally, press Menu key into such as the diagram:  
 Again short press Menu key into the diagram to show: Short press PREV/ NEXT key, confirm whether duct into, the assurance presses Menu key to return to search the telephone to show the interface originally behind.

At search the telephone to show the interface originally, after pressing Menu key into, short press the NEXT key choice to lead a telephone originally such as diagram:

Again short press Menu key into the diagram to show: Short press the PREV key choice, press the MENU key assurance manifestation, such as diagram,; Return to search the telephone namely originally interface.

10Game  
 Inside set up 3 games, is shown as diagram:



1. Push the box  
 The j beginning( Carry on the game)  
 Map of k( Set the map toll-gate)  
 The l return( Return up one class catalogue)  
 2. Russian square piece  
 The j beginning ( Carry on the game)

done: Mean that the UPGRADE has already completed this time upgrade or backups.  
 12.2 Remain on standby the appearance.  
 12.2.1 The interface manifestation  
 Ready: Mean that the UPGRADE has already ready to accept the claim of come from the PC.



The interface- firmware of USB- connect upgrades the 05 c. bmps  
 12.2.2 Operating instructions  
 When did not link up the USB Port the list returns the system SYSTEM menu according to the MENU.  
 12.3 Download upgrade  
 Download the upgrade is an edition of the system that the PC carry, downloading this machine, overlaying an edition of systematic now.

At the same time, be the system piece and its back ups to all damage, the download upgrade can repair the system piece.

12.3.1 Download upgrade interface manifestation  
 doing: Mean the UPGRADE just in the materiality upgrade or backups, the customer can't cancel the upgrade at this time.



18

3. Turn round to connect the bead

After carrying on small ball and small ball of flank (up, bottom, left, right) at present to make exchange, experienced line, or the jins is on-line to appear at the same time three or more than three together the small ball of the color then can remove, and account the cent, until can't make exchange.

11 Broadcast the movie (format of AMV)  
● In the stop interface, the concrete operation is basic to sow the operation of play music the stop interface together, just the submenu had another a "circulation mode", this operation method sows the submenu "circulation mode" operation of play music together. Then the operation method reference "MUSIC" page 4s go to page 7s.

● At broadcast the movie interface, short press PLAY key to return the movie pause interface, grow to press MENU key to return the main course list.  
12 UPGRADE  
The UPGRADE realization originally the upgrade of the system piece, repair, backup function. Enter for remain on standby the appearance.

12.1 Interface format



The USB-connect interface-firmware upgrade upgrade in 05 c. bmps  
● V1.2.00: Currently an edition of the system or just an edition of the system that upgrade.

● PC\_MuDisk: The UPGRADE is downloading to upgrade the system piece, PC^ the MuDisk carries the backup system firmware up.

● Current performance appearance, can be a Ready/ Busy ... doing ... / done/ failed.

■ Ready: Mean that the UPGRADE has already ready to accept the claim of come from the PC.

■ Busy: Mean that the UPGRADE have not yet started the materiality upgrade or backups, but just handle the claim of come from the PC.

■ Doing: Mean the UPGRADE just in the materiality upgrade or backups, the customer can't cancel the upgrade at this time.

Speed of k (Set the game speed)  
The l opens the mesh (Open this function after, at game can see the lane)

The m close mesh (Open this function after, at game can see the lane)

The n return (Return up one class catalogue)

3. Turn round to connect the bead

The j beginning (Carry on the game)

The k is most the high mark (Tallest record of this game)

The l return (Return up one class catalogue)

4. Withdraw: Return the main course list namely.

? Game play elucidation:  
1. Push the box:

The key that uses the direction controls the mean person, using the person to push the wood box, the person can push the box of the single only. Push all boxes to specify to order and then complete on the whole. (The customer can chase the particular map document with a catalogue that exists the player

of" user.box" document next, can play thus from the toll-gate that settle. But need not make other choices. Its document format can pass the related tool and can get, here is not by way of explanation.)

2. Russian square piece  
The key that uses the direction controls the direction and the whereabouts speed of the object of the whereabouts. Use to revolve the key to revolve the object direction. When a line of was all fill with by the object, meeting drive clearance, and the object of top will get down to move, until don't arrive to let go of the object be over. Like the hour pure a line of record 100 cents, two behaviors 300 cent, three behaviors 800 cent, four behavior 1500 cents. When the cent be worth each over 10000, the speed will speed.

The USB-connect interface-firmware upgrade- upgrade in 05 c. bmps

■ done: Mean that the UPGRADE has already completed this time upgrade or backups.



The interface-firmware of USB-connect upgrades the 05 cs- OK interface. bmp  
■ Failed: Mean the UPGRADE failed.



The interface-firmware of USB-connect upgrades the 05 cs- the failure interface. bmp  
12.3.2 Operating instructions  
Don't accept any key operation.

12.3.3 The PC claim processing  
Download upgrade the process invite within 15 seconds, after complete, cut over the appearance of done, show 1 automatic after second heavy system of run, to continue to complete to upgrade the function.

12.3.4 Excesscent processing  
In the download upgrade process if appear the correspondence failure, should establish the mechanism repeat several times to recover the correspondence.

While carrying to upgrade the half-way abeyance at that moment, should show the fail, show 1 after second heavy system of run, in order to make use of the backup repair system piece of the system piece. Software gearing:

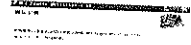
Put the random CD into after light get rid of the procedure will circulate automatically:



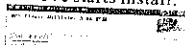
Click the next move:



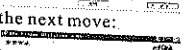
The modification that makes the oneself to correspond clicks the next move behind:



Click the next move starts install:



Click again the next move:



Click the close gearing complete.  
The point recommendation  
Different dimension function

General customers of MP3 will be perplex by "the data divulge a secret", don't wish to let own "personal data" see by the other people, can delete these "privacy's first only while being the friend to use the MP3, resulting in the very big trouble thus.  
Since today, "different dimension" function

that this machine provide resolved this problem thoroughly.

The customer can use the supplementary tool of this machine the disk of USB cut up into arbitrarily comparison of two part (customer at compute on board can see two dish signs, the 2 Ks of Windows wants to install the SP4, otherwise can see a dish sign only, going want to see another dish sign must choose "single and common dish" on the list encrypts the dish "under system enactment" the machine mode "TC combine disk to use) an among those, conceal contents, have no password can't see these data, this is very friendly "different dimension" function.  
Link the player to the calculation on board.  
2. Circulate the random supplementary gearing procedure tool wraps the MP3 Player Disk 100!



3. The format chemical engineering see first have the choice "cent area and encrypt" options, will encrypt the disk capacity to choose a fit capacity, and hook to choose to establish the user's name or passwords, at an importation of "new user's name" user's name, at an importation of "new password" password, re-input the same password. In "the new password confirm" place, click to press button "beginning", then start divide the area.



4. Divide the area complete, hint as follows



5. The calculator hints to re-start after press "assurance", making sure to lay equal stress on the new start the calculator.

6. The start can see have two disks (the Windows 2K SP4 front of edition can see a dish sign only,) behind, the disk (the row is in the second of) that order to see encrypt, have three documents up, in order to conceal the document, two among those are an in order to can carry out the document, and the disk space onlies have the 300 K size.



7. The movement can carry out the document "RdiskDecrypt.exe", inputting the user's name and passwords in the dialog box, if right, then can open the disk, heading up to face the document of Copy.



Technique specification

The manifestation	Order (128*128)	the 61K color
Model		
The manufacturer		877756
Drive (COM)	The full speed USB (ACQUILLI 99888)	
Link the computer	Flash memory (28K) - 15544	
Memory	Lithium battery	
Power supply	Chrom steel to broadcast time 10 hours	
	Sample rate	48.0K
	Record search the	WAV (2K bps), ACF (8Kbps)
Repeating	Record sound rate	55 bits/sec (1.27851 Kbps)
	Highcut	(1.335kW) (1.335kW) (2.000)
	Exposition in headphones	
	The MP3 encoded capacity	8K bps - 320K bps
	The WMA, WMW, and other	5K bps - 160K bps
MP3 WMA WMA AM	The frequency response	20Hz to 20KHz
	Believe the construction of compact	85dB
	Less the size	
	Objective	
Radio-FM	Receive the frequency scope	76MHz - 99MHz - 97.5MHz - 108MHz
	Save the set number	20 - 20
	Repeating	
	Exposition in headphones	(1.335kW) (1.335kW) (2.000)
	Believe the construction of	85dB
	Objective	
Music format	MP3, MP2, WMA, WMW, ASF, WAV, MP3	
For the compatibility	Lithium battery	
The language - later	Simple Chinese, English, Traditional Chinese, Japanese, Korean, French, German, Italian, Italian, Portuguese, Spanish, Russian, Arabic, Language - safe video, Denmark, Czech, Poland, Polish program, 1 and second language, Romanian, Turkish, Slovenian, Hebrew	
The support operating system	Windows 98, SE, ME, 2K, XP, Vista, Windows 7, 8, 10	